

1044 CHAPEL STREET UNIT 5

Floor Plans & Area Analysis

DRAWING TITLE:

1044 CHAPEL STREET, UNIT 5
Floor Plans & Area Analysis

INFOQUEST
TECHNOLOGIES
945-B Cromwell Avenue, Suite 310
Rocky Hill, Connecticut 06067
Telephone: 860-563-2600 Telefax: 860-563-2605
Internet: <http://www.iqt.com>

YALE UNIVERSITY PROPERTIES
433 Temple Street
New Haven, CT 06511

DATE: 11/16/08
SCALE: N/A
DRAWING #:

A-0

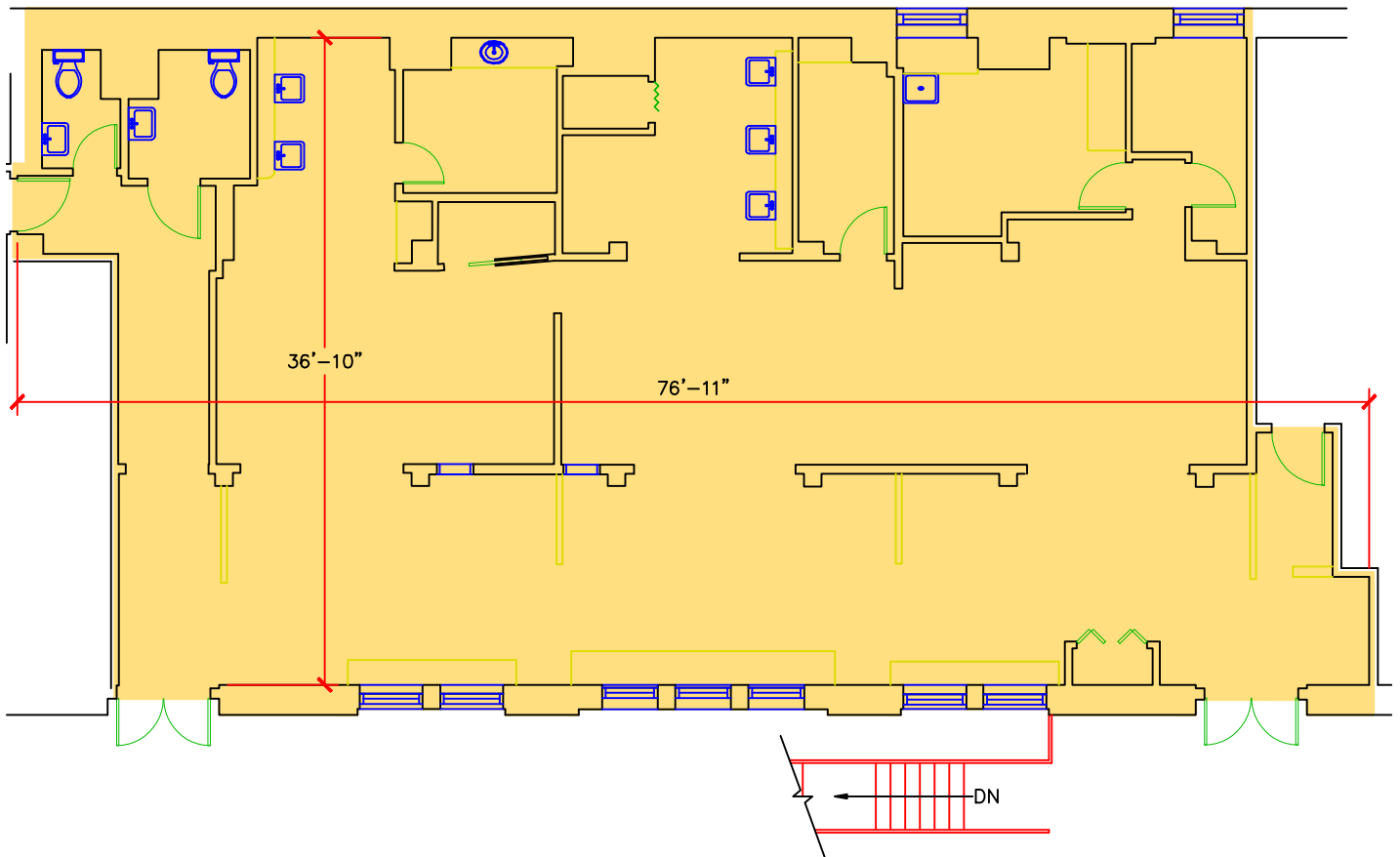
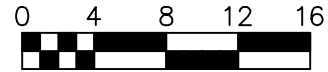
**1044 CHAPEL STREET
UNIT 5**

**FIRST FLOOR
BOMA ANALYSIS**

BOMA Tenant Area = 2,751 SF

STATEMENT OF COMPLIANCE

This plan complies with the 2004 BOMA Industrial Building Standard - Methodology A, for the measurement of BOMA Tenant Area and may be the basis for future calculations of BOMA Rentable Area in this building.



DRAWING TITLE:

**1044 CHAPEL STREET, UNIT 5
First Floor Plan & Area Analysis**

INFOQUEST
TECHNOLOGIES
945-B Cromwell Avenue, Suite 310
Rocky Hill, Connecticut 06067
Telephone: 860-563-2600 Telefax: 860-563-2605
Internet: <http://www.iqt.com>

YALE UNIVERSITY PROPERTIES
433 Temple Street
New Haven, CT 06511

DATE: 11/11/08
SCALE: 3/8" = 1'-0"
DRAWING A

A-1